

GARGIA

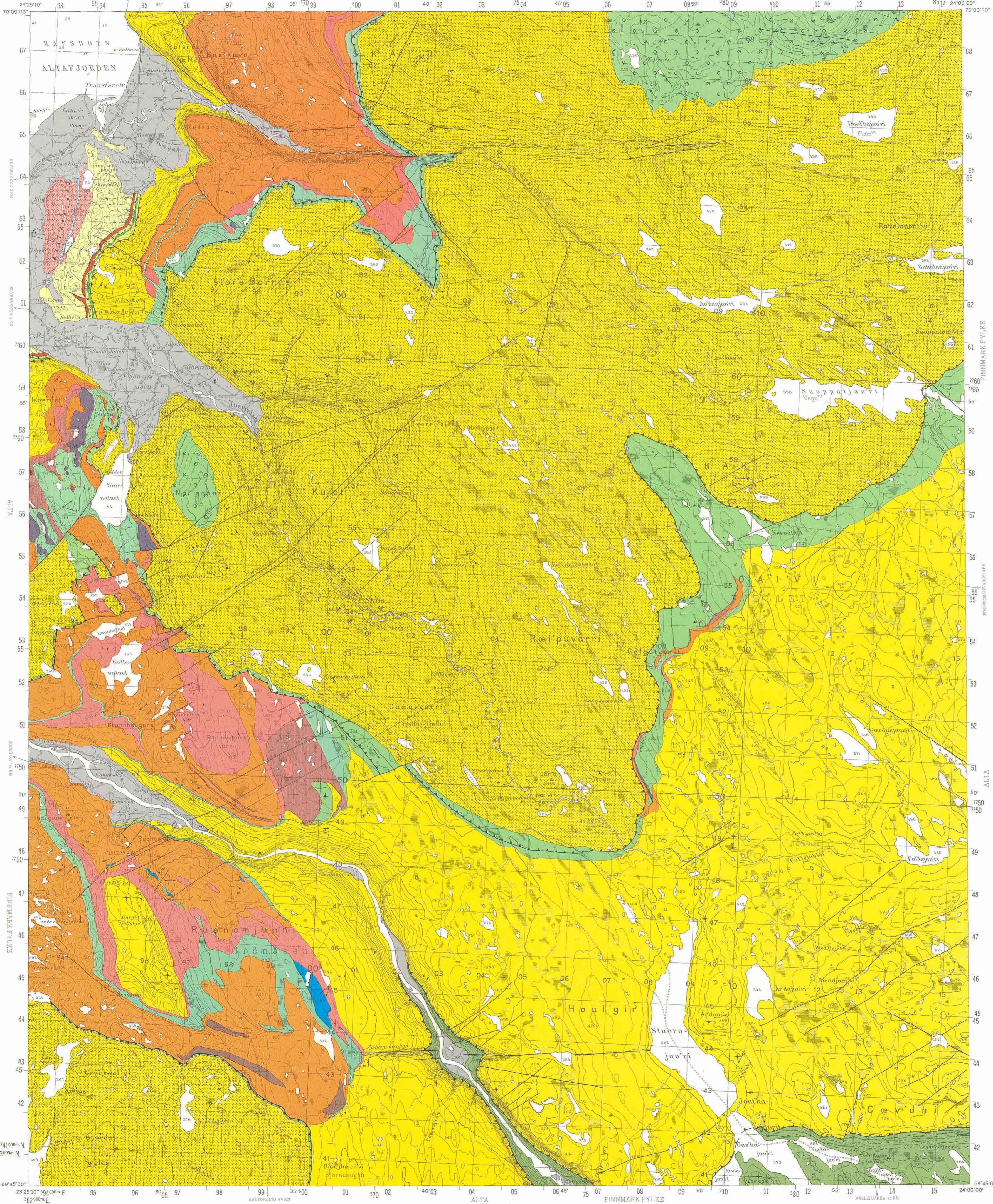
NORGES GEOLOGISKE UNDERSØKELSE

1934 IV

FINNMARK FYLKE

BERGGRUNNSKART 1:50000

PORSANGER



TEGNFORKLARING Legend

- KVARTERE AVSETNINGER**
Quaternary deposits
- MORENE, SAND, GRUS, LEIR osv.
Moraine, sand, gravel, clay etc.
- ALLOKTONE ENHETER**
Allochthonous units
- NALGANAS-DEKKET (TEOKAMBRUM)
Nalganas nappe (Tecombrian)
 - GRANATGLIMMERSKIFER
Garnet-mica schist
 - META-ARKOSE
Meta-arkose schist
 - GLIMMERSKIFER
Mica schist
- GARGIA-DEKKET**
Gargia nappe
- NALFJELLOPPEN (UKJENT ALDER)**
Nalfjell Group (Unknown age)
- GLIMMERSKIFER
Mica schist
 - ULTRAMAFISKE BERGARTER
Ultramafic rocks
 - KALKGLIMMERSKIFER / MARMOR
Calcareous mica schist / Marble
 - HORNBLENDESKIFER
Hornblende schist
 - FINKORNET, LYS GNEIS (OFTE KALKSPATHOLDIG)
Fine-grained, light gneiss (frequently calcite-bearing)
 - BÅNDET GNEIS, ØYEGNEIS
Banded gneiss, augen gneiss
 - AMFIBOLITT
Amphibolite
- KOMSAGRUPPEN (TEOKAMBRUM)**
Komes Group (Tecombrian)
- META-ARKOSE
Meta-arkose
- AUTOKTONE ENHETER**
Autochthonous units
- BORRASGRUPPEN, DIVIDALGRUPPEN ØST FOR GARGIA (TEOKAMBRUM OG YNGRE)**
Borras Group, Dividal Group east of Gargia (Tecombrian and younger)
- UDIFFERENSJERT, BASALKONGLOMERAT, LEIRSKIFER, SILTSTEIN,
SANDSTEIN, DOLOMIT ØST FOR GARGIA
Undifferentiated, Basal conglomerate, shale, siltstone, sandstone, dolomite (east of Gargia)
 - KVARTSITT OG SKIFER
Quartzite and shale
 - BLÅ OG GRØNN SKIFER
Blue and green shale
 - KVARTSITT-KONGLOMERAT
Quartzite conglomerate
 - TILLITT
Tillite
- BOSEKOPGRUPPEN (SEN-PREKAMBRUM)**
Bossekop Group (Late Precambrian)
- KVARTSITT I VEKSLING MED LEIRSKIFER
Quartzite alternating with shale
 - KVARTSITT
Quartzite
- RAIPASGRUPPEN (PREKAMBRUM)**
Raipas Group (Precambrian)
- BASALITISK TUFF OG TUFFITT
Basaltic tuff and tuffite
 - DOLOMIT OG KALKSTEIN
Dolomite and limestone
 - METABASALT
Meta-basalt

GEOLOGISKE SYMBOLER

- Geological symbols**
- STROK OG FALL, LAGDELING (VERTIKALT, HORIZONTALT)
Strike and dip, layering (vertical, horizontal)
 - STROK OG FALL, SKIFRIGHET (VERTIKALT, HORIZONTALT)
Strike and dip, schistosity (vertical, horizontal)
 - FOLDINGSÅKSER (HORIZONTALT)
Fold axes (horizontal)
 - KONSTRUERTE SKIFRIGHETS-LINJER
Constructed schistosity lines
 - BERGARTSGRENSE
Rock boundary
 - FAULT OR JOINT
Fault or joint
 - SKYVEPLAN
Thrust plane
- ERTSFØREKOMSTER OG STEINBRUDD**
Ore deposits and quarries
- KOBERNIS, SVOVELKJIS
Chalcopyrite, pyrite
 - SKIFERBRUDD
Flagstone quarry
 - MAGNETITT
Magnetite

Geologisk kartlagt av O. Høttedahl (NGU 84, 1918), S. Feyn (NGU 228, 1964), K.B. Zwaan og P. Ryghaug (NGU og NGU Nord-Norge prosjektet 1971 og 1976, rapport nr. 1035/71), A.M. Gautier (Ecole des sciences de la terre, Institut de minéralogie, Genève og Elkem-Spigerverket A/S 1971/1972). Redigert av K.B. Zwaan, NGU 1. jan. 1975.

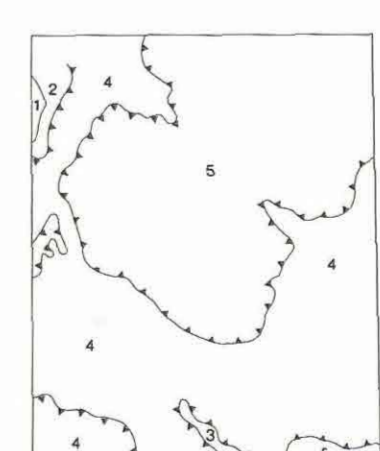
Kartgrunnlag : Norges geografliske oppmålings kart etter tilsetelse
 Reprograff : Norges geologiske undersøkelse
 Forlag : Universitetsforlaget
 Trykk : Nordenskiöldska LAG A/S, Trondheim - 1977

Referanse til dette kartet: ZWAAN, K.B. - 1977
 GARGIA, berggrunnsgeologisk kart 1934 IV - M. 1:50.000
 Norges geologiske undersøkelse

BRUK AV UTM RUTENETT FOR REFERANSEPUNKTER

Instruction in using UTM grid for reference points

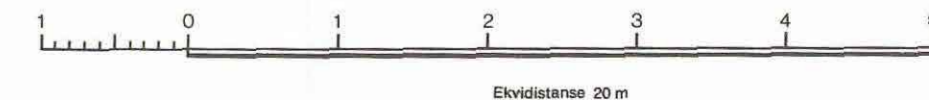
SOVRETTET GRID ZONE DESIGNATION	KARTETITTEL 300 M BØYER	SKJEMPEL SAMPLE POINT, BYV STILLA	TO GJØRE A STANDARD REFERENCE ON THIS SHEET TO NEAREST 100 METERS
34 W	300 m scale (Gr. No. 13 vanishes)	FC	Read letters identifying 100-1000 meter square in which the point lies
EC FC	Each column is 10 meters for point Each row is 100 meters for row	66 7	Locate first VERTICAL grid line to LEFT of point and read LETTER figure labeling the line either to the top or bottom margin, or on the line itself. Estimate tenths from grid line to point
100	Each column is 10 meters for point Each row is 100 meters for row	49	Locate first HORIZONTAL grid line BELOW point and read LETTER figure labeling the line either to the left or right margin, or on the line itself. Estimate tenths from grid line to point
	UTSLETTET	ES617802	SAMPLE REFERENCE
	Set or 30' or 60' scale parallel with the drawing. Reference to CENTER of grid following	7741900	1 reading across 10' in any direction, profile Old Zone Designation
	SMÅ ruter gir full størrelse. Bok bare STORE for å lese ruter	7741900	ENTER the SMALLER figure of any grid number, then 0's for locating the full coordinate. Use ONLY the LARGER figure of the grid number.



- 5 Nalganas-dekket
- 4 Gargia-dekket
- 3 Dividalgruppen
- 2 Borrasgruppen og Bossekopgruppen
- 1 Raipasgruppen

- K.B. Zwaan og P. Ryghaug
- O. Høttedahl
- S. Feyn
- A.M. Gautier

Målestokk 1 : 50000



KARTBLADNDELING

Location diagram

