

GEOLOGICAL MAP
LAND AND SEA AREAS OF
NORTHERN EUROPE

0 100 200 300 400 500 km
 Scale 1:4,000,000

Ellen M. O. Sigmund
 GEOLOGICAL SURVEY OF NORWAY

Rocks of the oceanic crust

Cenozoic rocks

Symbol	Age	Description
[Symbol]	Quaternary	Quaternary deposits, including glacial till, sand, and gravel.
[Symbol]	Neogene	Neogene rocks, including Tertiary and Quaternary.
[Symbol]	Quaternary	Quaternary deposits, including glacial till, sand, and gravel.
[Symbol]	Neogene	Neogene rocks, including Tertiary and Quaternary.

Rocks of the continental crust

Paleozoic rocks

Symbol	Age	Description
[Symbol]	Permian	Permian rocks, including Permian and Triassic.
[Symbol]	Carboniferous	Carboniferous rocks, including Carboniferous and Permian.
[Symbol]	Devonian	Devonian rocks, including Devonian and Carboniferous.
[Symbol]	Silurian	Silurian rocks, including Silurian and Devonian.
[Symbol]	Ordovician	Ordovician rocks, including Ordovician and Silurian.
[Symbol]	Pre-Cambrian	Pre-Cambrian rocks, including Precambrian and Paleozoic.

Paleozoic and Paleozoic rocks

Symbol	Age	Description
[Symbol]	Permian	Permian rocks, including Permian and Triassic.
[Symbol]	Carboniferous	Carboniferous rocks, including Carboniferous and Permian.
[Symbol]	Devonian	Devonian rocks, including Devonian and Carboniferous.
[Symbol]	Silurian	Silurian rocks, including Silurian and Devonian.
[Symbol]	Ordovician	Ordovician rocks, including Ordovician and Silurian.
[Symbol]	Pre-Cambrian	Pre-Cambrian rocks, including Precambrian and Paleozoic.

Paleozoic rocks

Symbol	Age	Description
[Symbol]	Permian	Permian rocks, including Permian and Triassic.
[Symbol]	Carboniferous	Carboniferous rocks, including Carboniferous and Permian.
[Symbol]	Devonian	Devonian rocks, including Devonian and Carboniferous.
[Symbol]	Silurian	Silurian rocks, including Silurian and Devonian.
[Symbol]	Ordovician	Ordovician rocks, including Ordovician and Silurian.
[Symbol]	Pre-Cambrian	Pre-Cambrian rocks, including Precambrian and Paleozoic.

Archean to Paleozoic rocks

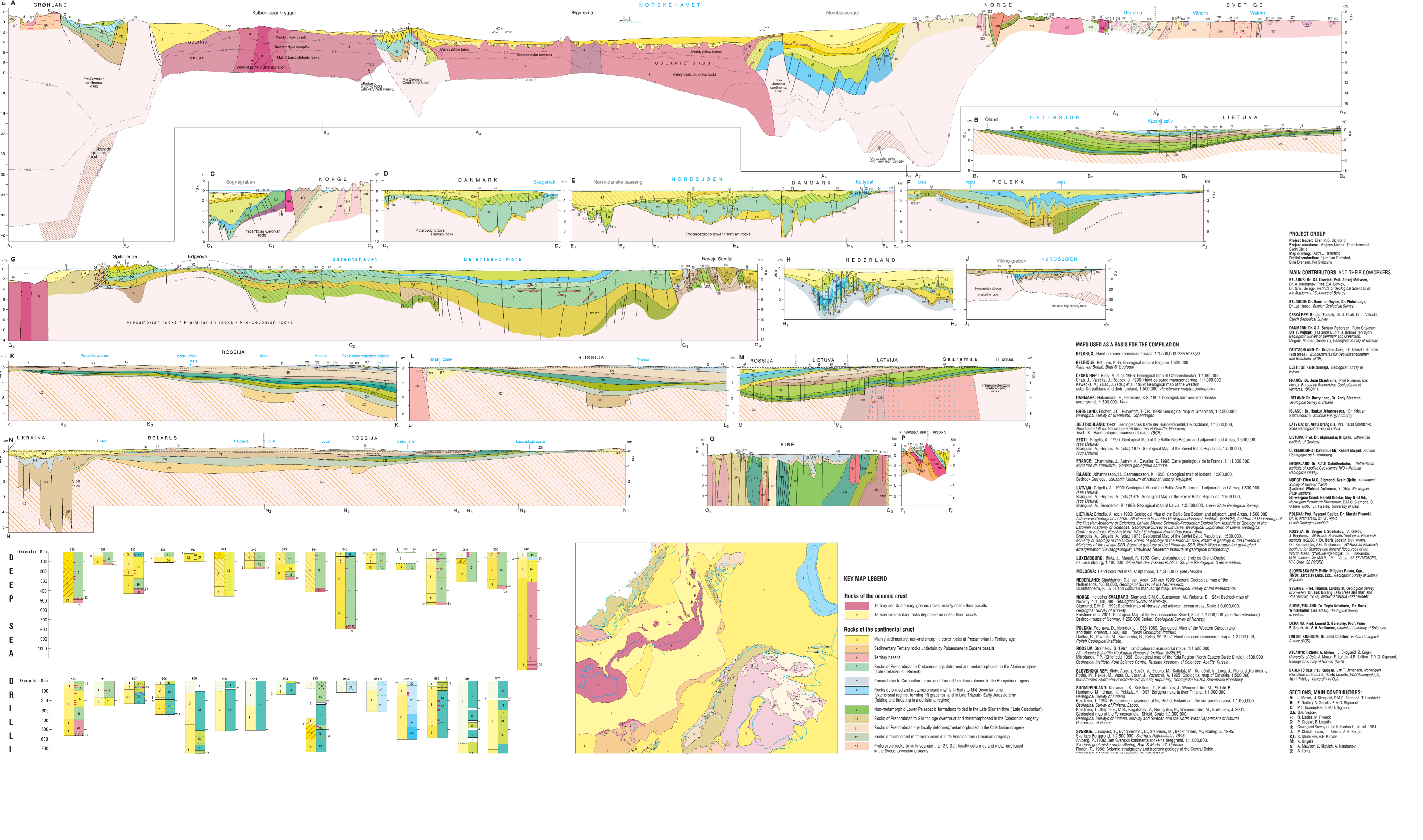
Symbol	Age	Description
[Symbol]	Archean	Archean rocks, including Archean and Paleozoic.
[Symbol]	Paleozoic	Paleozoic rocks, including Paleozoic and Cenozoic.
[Symbol]	Cenozoic	Cenozoic rocks, including Cenozoic and Quaternary.

Archean rocks

Symbol	Age	Description
[Symbol]	Archean	Archean rocks, including Archean and Paleozoic.
[Symbol]	Paleozoic	Paleozoic rocks, including Paleozoic and Cenozoic.
[Symbol]	Cenozoic	Cenozoic rocks, including Cenozoic and Quaternary.

Geological symbols

Symbol	Description
[Symbol]	Geological boundary
[Symbol]	Topographic contour
[Symbol]	Water body
[Symbol]	Urban area
[Symbol]	Road
[Symbol]	Railway
[Symbol]	Administrative boundary



GEOLOGICAL TIME TABLE

Period	Age (Ma)	Key Events
Quaternary	0 - 2.6	Ice ages, modern humans
Neogene	2.6 - 23	Climate change, mammals
Cenozoic	23 - 66	Continental drift, dinosaurs
Paleozoic	252 - 541	Supercontinent Pangea, dinosaurs
Pre-Cambrian	> 541	First life, supercontinents